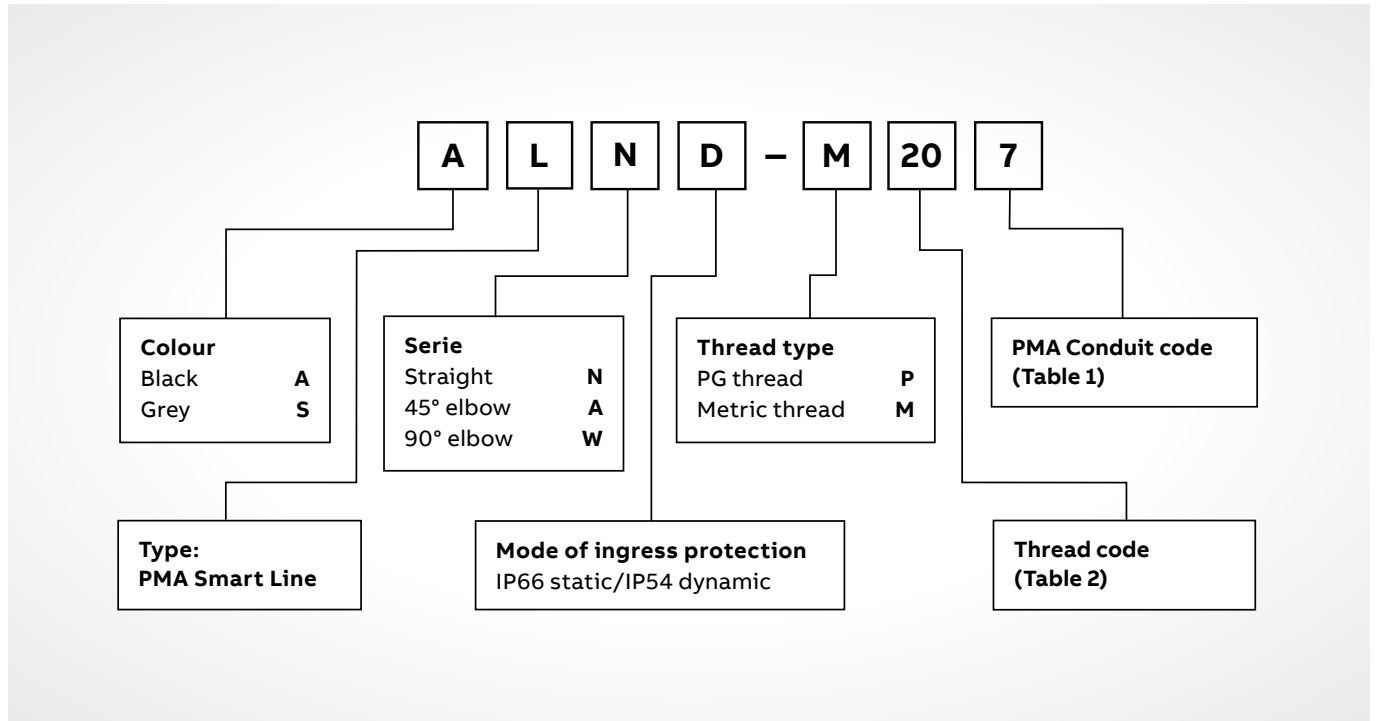


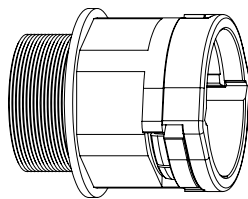
PMA® Smart Line

Part number codes

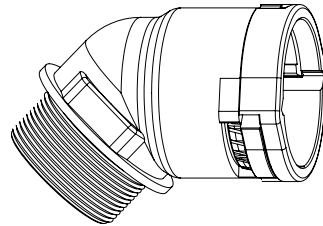


Connector series

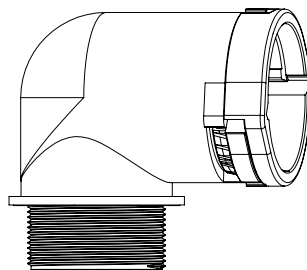
- 01 Straight (N)
- 02 45° elbow (A)
- 03 90° elbow (W)



01



02



03

PMA® Smart Line

Size codes, installation

Table 1: Conduit codes

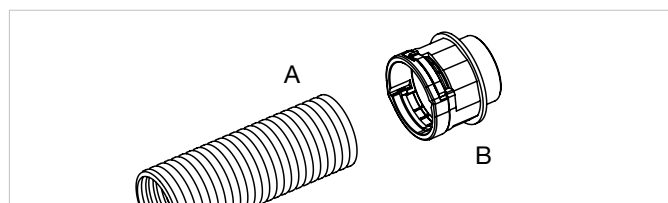
| Nominal width | Metric size | PMA code |
|---------------|-------------|----------|
| 07 | 10 | M |
| 10 | 12 | 0 |
| 12 | 16 | 2 |
| 17 | 20 | 7 |
| 23 | 25 | 3 |
| 29 | 32 | 9 |
| 36 | 40 | 6 |
| 48 | 50 | 8 |

Table 2: Thread codes

| Thread Metric | PMA code |
|---------------|----------|
| M12 x 1.5 | M12 |
| M16 x 1.5 | M16 |
| M20 x 1.5 | M20 |
| M25 x 1.5 | M25 |
| M32 x 1.5 | M32 |
| M40 x 1.5 | M40 |
| M50 x 1.5 | M50 |
| M63 x 1.5 | M63 |

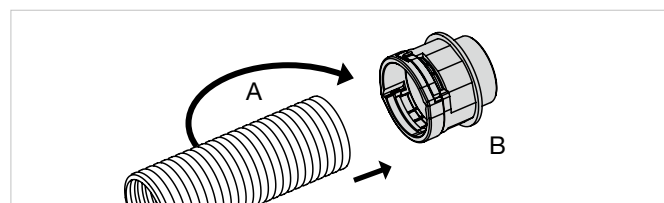
| Thread PG | PMA code |
|-----------|----------|
| PG07 | P07 |
| PG09 | P09 |
| PG11 | P11 |
| PG13.5 | P13 |
| PG16 | P16 |
| PG21 | P21 |
| PG29 | P29 |
| PG36 | P36 |
| PG48 | P48 |

Installation IP66



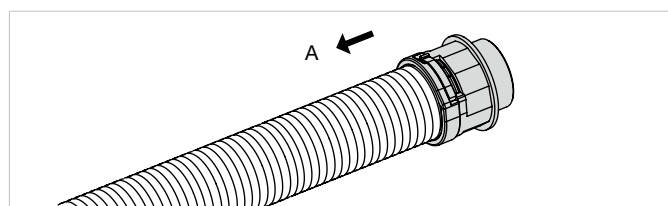
01

A = Conduit
B = Fitting



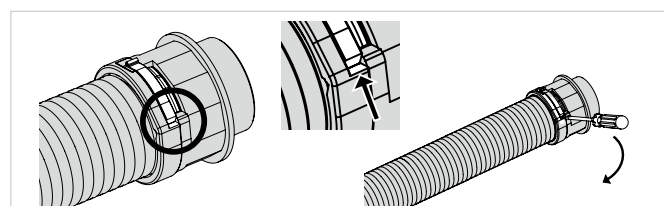
02

Push in the conduit (A) with a slight twist until the stop.



03

Pull back the conduit (A) slightly to ensure the locking mechanism is fully engaged.



04

To disengage the locking mechanism use a size 1 screwdriver.